



Valves

Handling the world's dry bulk solids[®]



VORTEX[®] QUANTUM SERIES ORIFICE GATE[™]

The patented Quantum[™] Series Orifice Gate[™] is specifically designed to handle dry bulk solids in gravity flow, dilute phase, or vacuum conveying systems. Traditional knife gates or butterfly valves are designed to handle gases and liquids, not dry materials. These valves rely on soft rubber seals, which erode or tear away during use, allowing leakage of air and material through the valve or into the atmosphere. This causes the frequent need for valve maintenance, production inefficiencies, and unsanitary environments. The Quantum[™] Series Orifice Gate[™] is designed to eliminate these problems, enabling you to meet your objectives by increasing production, while decreasing labor and equipment costs.

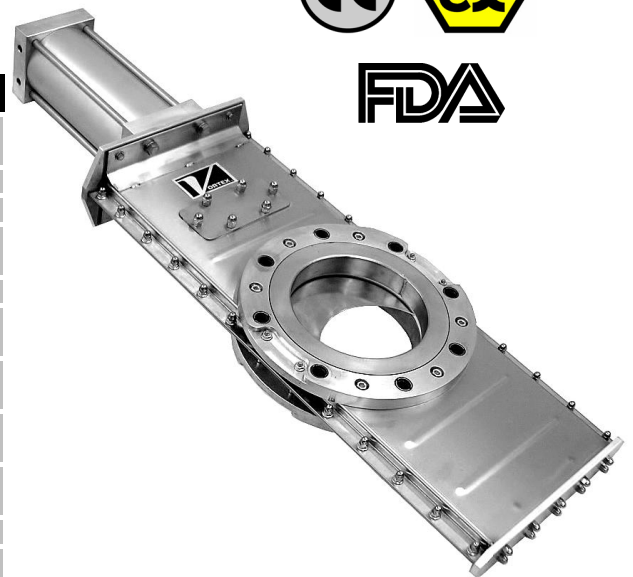
Vortex[®] Quantum Series[™] Orifice Gate[™] Features

- Self-Cleaning Action, No Material Build-Up
- Low Cost Operation
- Smooth, Unobstructed Bore For Unrestricted Flow Of Material
- Seal Protected from Abrasion
- Accurate Metering of Material
- Easy Installation and Maintenance



Valve Specifications

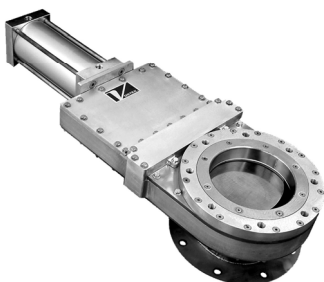
Size/Bore Options	50mm, 75mm, 100mm, 150mm, 200mm, 250mm, 300mm, 350mm Diameters.
Media	Powder, Pellets, Granulars
Connection Options	Compression Coupling, ANSI, DIN, JIS, Custom Flanges
Media Temperature	Modifications can be made to allow up to 200°C continuous to 230° C intermittent service.
Media Pressure	-0.1 MPa +0.1 MPa, (1 barg), (15 psig)
Metal Construction Options	304 or 316L Stainless Steel, Aluminum, and/or Carbon Steel
Seal/Seat Material Options	Nylon, PET, UHMW, Glass Filled Teflon, Rubber, and/or Silicon
Drive/Actuation Options	Double Acting Air Cylinder and Solenoid Operated Air Control Valve, Electric Actuator, Hand Wheel
Position Detection	Magnetic Reed Switch, Proximity Switch, or Mechanical Switch
Compliance/Approvals	CE, ATEX, FDA
Industry Use	Plastics, Petrochemicals, Chemicals, Foods, Minerals, Textiles, Agriculture



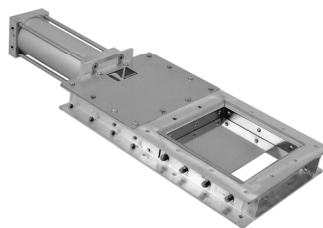
Application Specific Modifications

G	Valve is constructed of a painted mild steel body with 304 or 316L stainless steel material contact.
H	Valve is constructed of an aluminium body and flange with aluminium material contact.
F	Valve is constructed of an aluminium body and flange with 304 or 316L stainless steel material contact.
J	Valve is constructed of a 304 stainless steel body and flange with 304 or 316L stainless steel material contact.
HT3	Modifications are made allowing 120°C continuous to 150°C intermittent service.
HT4	Modifications are made allowing up to 200°C continuous to 230° C intermittent service.
WS1	Gate blade is electro-polished. Polyethylene (PET or UHMW) pressure plate seals are used to replace nylon.

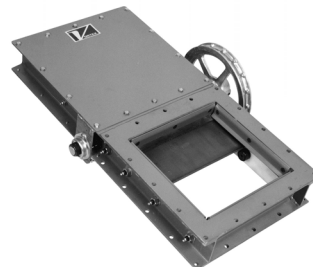
Additional Slide Gates Offered By Vortex



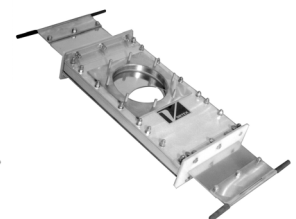
HDP[®] Slide Gate



Vortex[®] Roller Gate



Abrasive Duty[™] Slide Gate



Hand Slide Orifice Gate[™]

For more information, please visit our website at www.vortexvalveseurope.com