



Valves

Handling the world's dry bulk solids®



VORTEX® HAND SLIDE ORIFICE GATE™

The Vortex® Hand Slide Orifice Gate™ is designed to specifically to handle dry bulk solids in gravity flow conveying. Traditional knife gates or butterfly valves are designed to handle gases and liquids, not dry materials. These valves rely on soft rubber seals, which erode or tear away during use, allowing leakage of air and material through the valve or into the atmosphere. This causes the need for frequent valve maintenance, production inefficiencies, and unsanitary environments. The Hand Slide Orifice Gate™ is designed to eliminate these problems, enabling you to meet your objectives by increasing production, while decreasing labor and equipment costs.

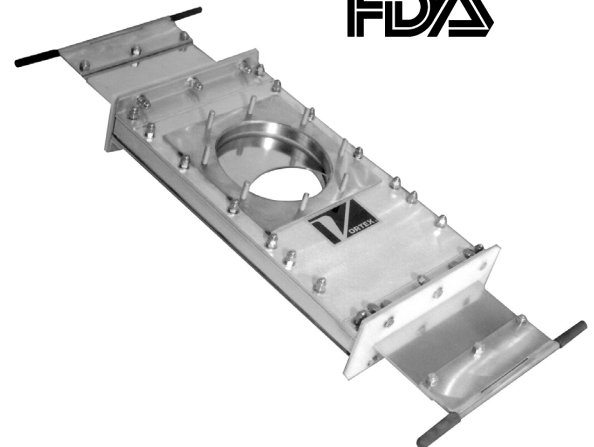
Vortex® Hand Slide Orifice Gate™ Features

- Self-Cleaning Action, No Material Build-Up
- Low Cost Operation
- Smooth, Unobstructed Bore For Unrestricted Flow Of Material
- Seal Protected from Abrasion
- Accurate Metering of Material
- Easy Installation and Maintenance



Valve Specifications

Size/Bore Options	50mm, 75mm, 100mm, 150mm, 200mm, 250mm, 300mm, 350mm Diameters.
Media	Powder, Pellets, Granulars
Connection Options	Compression Coupling, ANSI, DIN, JIS, Custom Flanges
Media Temperature	Modifications can be made to allow up to 200°C continuous to 230° C intermittent service.
Media Pressure	0 MPa, Gravity Only
Metal Construction Options	304 or 316L Stainless Steel, Aluminum, and/or Carbon Steel
Seal/Seat Material Options	Nylon, PET, UHMW, Glass Filled Teflon, Rubber, and/or Silicon
Drive/Actuation Options	Hand Slide
Position Detection	Visual Detection
Compliance/Approvals	CE, ATEX, FDA
Industry Use	Plastics, Petrochemicals, Chemicals, Foods, Minerals, Textiles, Agriculture



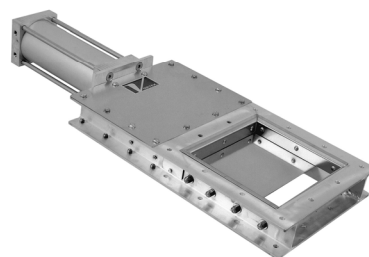
Application Specific Modifications

S	Material / metal contact is 316L stainless steel.
P	Mounting studs are removed and special mounting holes matching an ANSI pattern are provided for bolting through the gate flange.
HT3	Modifications are made allowing 120°C continuous to 150°C intermittent service.
HT4	Modifications are made allowing up to 200°C continuous to 230° C intermittent service.
WS1	Gate blade is electro-polished. Polyethylene (PET or UHMW) pressure plate seals are used to replace nylon.

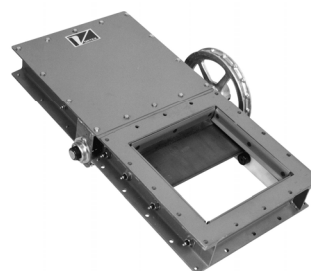
Additional Slide Gates Offered By Vortex



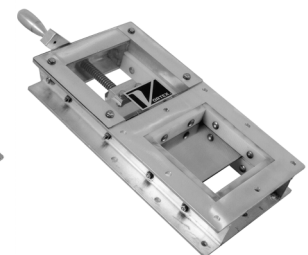
HDP® Slide Gate



Vortex® Roller Gate



Abrasive Duty Slide Gate™



Vortex® Maintenance Gate

For more information, please visit our website at www.vortexvalveseurope.com