



Valves

Handling the world's dry bulk solids®



VORTEX® HDP® SLIDE GATE

The unique “rising” blade design of the patented Vortex® HDP® Slide Gate sets itself apart from traditional industry slide gates by providing positive material shut-off in applications. The HDP® offers the durability and efficiency required to meet today's material processing demands. Traditional slide gates or butterfly valves are designed to handle gases and liquids, not dry materials. These valves rely on soft seals susceptible to blast abrasion and material packing, eventually allowing leakage of air and material through the valve or to the atmosphere. This causes the need for frequent valve maintenance, production inefficiencies, and unsanitary plant environments. The Vortex® HDP® Slide Gate is designed to prevent these problems, enabling you to meet your objectives by increasing production, while decreasing labor and equipment costs.

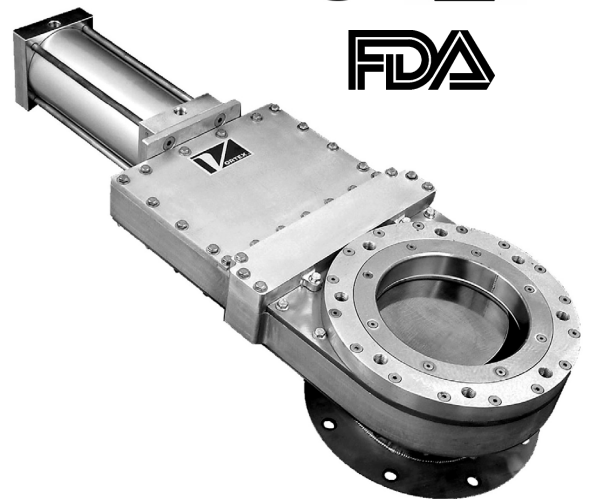
HDP® Slide Gate Features

- Designed to Handle Abrasive or Sticky Materials
- Positive Seal of Conveying Air and Fine Powders
- Seals Protected from Abrasion
- Long Service Life
- Easy Installation and Maintenance



Valve Specifications

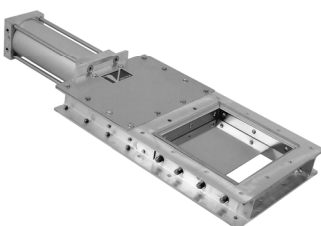
Size/Bore Options	100mm, 150mm, 200mm, 250mm, 300mm 350mm, 400mm Diameters.
Media	Powder, Pellets, Granulars
Connection	Compression Coupling, ANSI, DIN, JIS, Custom Flanges
Media Temperature	Modifications are made allowing up to 200°C continuous to 230° C intermittent service.
Media Pressure	+0.5 MPa, (5 barg), (75 psig)
Metal Construction Options	304, 316L Stainless Steel, Aluminum, and or Carbon Steel
Seal/Seat Material Options	Nylon, PET, UHMW, Glass Filled Teflon, Rubber, and/or Silicon
Drive/Actuation Options	Double Acting Air Cylinder and Solenoid Operated Air Control Valve
Position Detection	Magnetic Reed Switch
Compliance/Approvals	CE, ATEX, FDA
Industry Use	Plastics, Petrochemicals, Chemicals, Foods, Minerals, Textiles, Agriculture



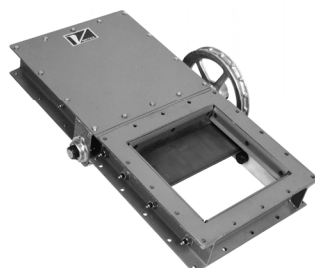
Application Specific Modifications

SC	Material / metal contact is 304 stainless steel. Replace HR Carbon Steel Insert Flange and Ring, Upper Main Flange, Forward Liner, Forward Bonnet Seal Retainer, and Outlet Return Pan with 304 Stainless Steel.
S	Material / metal contact is 316L stainless steel. Replace HR Carbon Steel Insert Flange and Ring, Upper Main Flange, Forward Liner, Forward Bonnet Seal Retainer, and Outlet Return Pan with 316LStainlessSteel.
MG	Air cylinder has a magnetic ring, which activates a magnetic reed position indication switch.
PET	Nylon replaces PET for the Blade Support Guides.
DIN	Replace Inlet ANSI pattern Flange with flange pattern to match DIN mounting pattern.
HT4	Modifications are made allowing 200°C continuous to 230° C intermittent service.
SSI	Add welded integral Special Service Inlet to standard Insert Flange and Insert Ring Assembly.

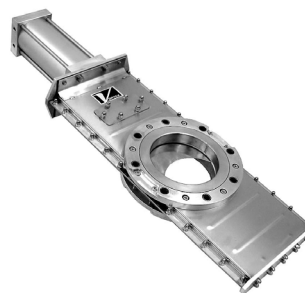
Additional Slide Gates Offered By Vortex



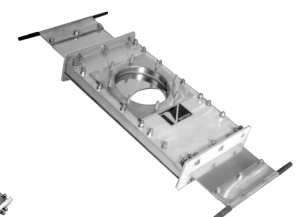
Vortex® Roller Gate



Abrasive Duty™ Slide Gate



Orifice™ Gate



Hand Slide Orifice™ Gate

For more information, please visit our website at www.vortexvalveseurope.com