



Valves

Handling the world's dry bulk solids®



VORTEX® ABRASIVE DUTY SLIDE GATE™

The Vortex® Abrasive Duty Slide Gate™ is designed to meet the demanding applications associated with handling material such as sand, gravel, whole grains, and coal. The narrow profile, choice of actuators, and custom rectangular size make this slide gate adaptable to most existing installations. Optional round inlets or outlets flanges and dust return pans are also available.

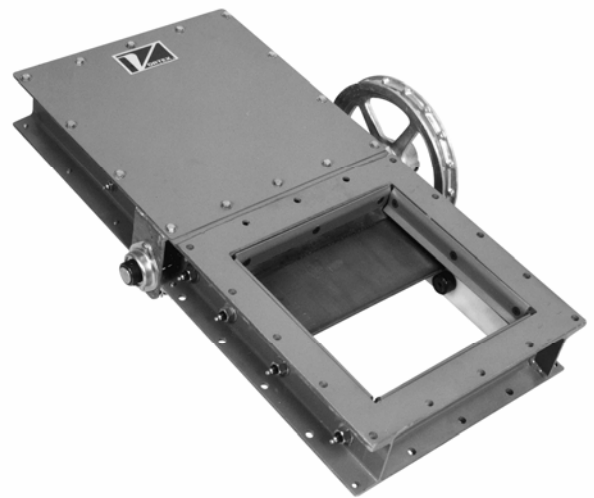
Vortex® Abrasive Duty Slide Gate™ Features

- Low Cost Operation
- Designed for Tough Aggregate handling
- Positive Seal of Material
- Seals Protected from Abrasion
- Accurate Metering of Material
- Easy Installation and Maintenance



Valve Specifications

Size/Bore Options	100mm to 1000mm, Square, Rectangular, or Round
Media	Aggregates, Granulars
Connection Options	ANSI 150LB, DIN/PN10/PN40, JIS/10K, Custom Flanges Square or Rectangular
Media Temperature	Modifications are made allowing up to 260°C continuous to 300° C intermittent service.
Media Pressure	0 MPa, Gravity Flow Only
Metal Construction Options	304 Stainless Steel, Carbon Steel, and/or Abrasion Resistant Carbon Steel
Seal/Seat Material Options	Nylon, PET, Glass Filled Teflon, Carbon Steel
Drive/Actuation Options	Double Acting Air Cylinder and Solenoid Operated Air Control Valve, Electric Actuator, Hydraulic, Hand Wheel, or Chainwheel
Position Detection	Magnetic Reed Switch, Proximity Switch, Mechanical Switch
Compliance/Approvals	CE, ATEX
Industry Use	Plastics, Petrochemicals, Chemicals, Minerals, Textiles, Agriculture



Application Specific Modifications

SC	Blade and frame are made of 304 stainless steel. Rollers are 440 stainless steel and roller stud bolts are 304 or 18-8 stainless.
MG	Air cylinder has a magnetic ring which activates a magnetic reed position indicating switch
HT3	Modifications are made allowing 120°C continuous to 300°C intermittent service.
HT4	Modifications are made allowing 200°C continuous to 230°C intermittent service.
HT6	Modifications are made allowing 260°C continuous to 300°C intermittent service.
AR	Slide blade is made of AR plate for handling more abrasive materials.
DS	The dust seal will help to eliminate or reduce dusting to atmosphere. The Enhanced Bonnet Seal option would be preferred for handling rocks with dust present.

Additional Slide Gates Offered By Vortex



HDP® Slide Gate



Orifice Gate™



Vortex® Roller Gate



Hand Slide Orifice Gate™

For more information, please visit our website at www.vortexvalveseurope.com